



Animal Care & Use Program Oversight & Monitoring – The AAALAC Perspective

Gary L. Borkowski
June 26, 2019
13th TALAS International Conference



AAALAC Accreditation

1. Voluntary (collegial, confidential, welfare)
2. Peer review
3. Scientific validity through quality animal care
4. Collaboration in a global marketplace
5. Demonstrates accountability
6. Stimulates continuous improvement
7. Advocacy for every institution



www.aaalac.org

Over 1000 Accredited Programs

AAALAC INTERNATIONAL ACCREDITED PROGRAMS CAN BE FOUND IN 47 COUNTRIES AROUND THE WORLD:

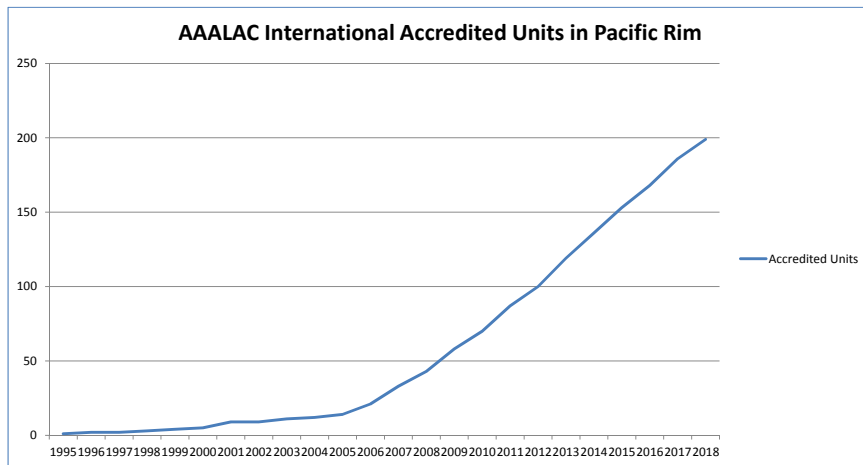
- Australia • Austria • Barbados • Belgium • Brazil • Cambodia • Canada • Chile • Croatia • Denmark • Egypt • Federation of St. Kitts and Nevis
- Finland • France • Germany • Hungary • India • Indonesia • Ireland (Rep. of) • Israel • Italy • Japan • Kenya • Korea • Malaysia • Mauritius • Mexico
- Norway • P.R. China • Peru • Poland • Portugal • Qatar • Russia • Scotland • Singapore • South Africa • Spain • Sweden • Switzerland • Taiwan/R.O.C.
- Thailand • The Netherlands • Turkey • United Kingdom • United States • Vietnam



www.aaalac.org

Pacific Rim Growth

AAALAC International Accredited Units in Pacific Rim



Pacific Rim Section

2 PacRim Sections



www.aaalac.org

Who Is AAALAC International

- Member Organizations
 - ICLAS, FELASA, AFLAS, ANZCCART, JCLAM, KCLAM, European Federation of Pharmaceutical Industries and Associations
- Board of Director
- CEO, Global Director and three Senior Directors
- Volunteer international experts
 - 60+ Council on Accreditation members
 - 300+ ad hoc Specialists/Consultants



www.aaalac.org

Rules of Accreditation

Updated June 2018

- | | |
|--|---|
| ▪ Definitions | ▪ Granting and denying accreditation |
| ▪ Standards | ▪ Accreditation Status |
| ▪ Fees | ▪ Hearing and appeals |
| ▪ Procedures | ▪ Certificates |
| ▪ Site Visits and site visitors | ▪ Confidential records |



www.aaalac.org

Section 1. Definitions

Animals

- All animals used or to be used in research, teaching or testing at accreditable units are to be included and evaluated in accordance with the standards set forth in Section 2 of these Rules.
- **These include traditional laboratory animals, farm animals, wildlife, and aquatic animals.**
- Nontraditional animals, inclusive of [invertebrate species](#), are also included where they are relevant to the unit's mission.



www.aaalac.org

Animal Ownership

(<http://www.aaalac.org/accreditation/rules.cfm>)

Rules of Accreditation

All animal programs and facilities of the accreditable unit must be included in the application and evaluated...

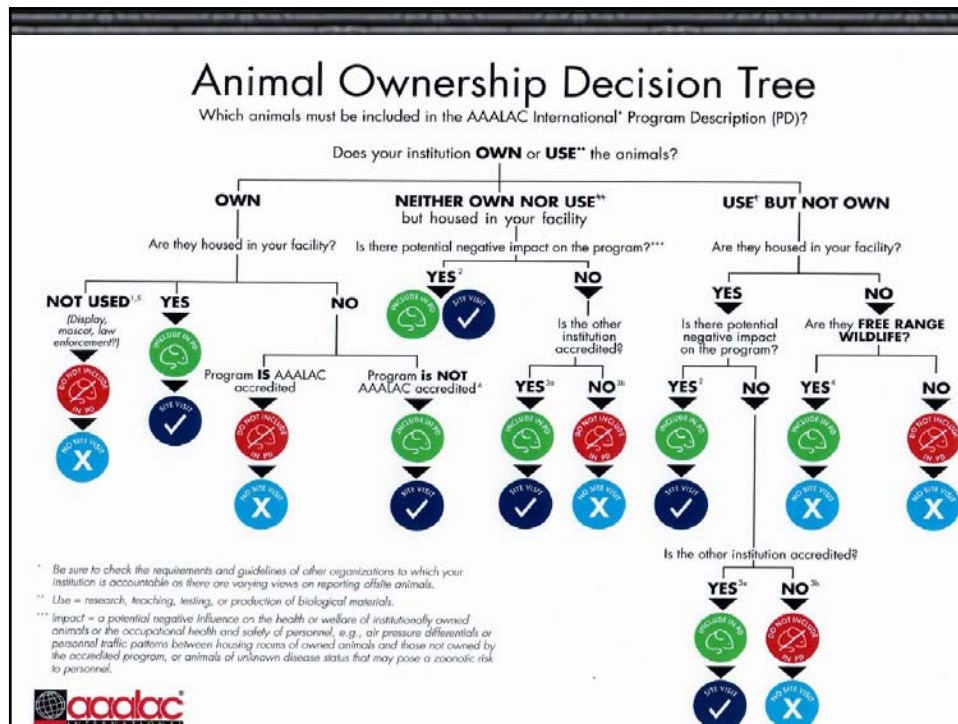
Program Description (PD) and Site Visit

All animals owned by the institution:

- **At all buildings**
- **At satellite facilities, and investigator laboratories**
- **At contractor's facility if the contractor's program is not AAALAC accredited**



www.aaalac.org



Criteria for Accreditation

- AAALAC International accredits **active** animal care and use programs.
- An active animal care and use program includes: animals; facilities; equipment; professional, technical, and administrative support; and policies and programs for institutional responsibilities, animal husbandry and veterinary care.

Accreditable Unit

- Any public or private institution, organization, or agency maintaining, using, importing, or producing animals for purposes of scientific research, teaching, or testing may be accredited.
- The **appropriate administrative entity** making application is the accreditable unit, and its animal care and use programs and facilities are evaluated to determine accreditation status.
 - All animal programs and facilities of the accreditable unit must be included in the application and evaluated.



www.aaalac.org

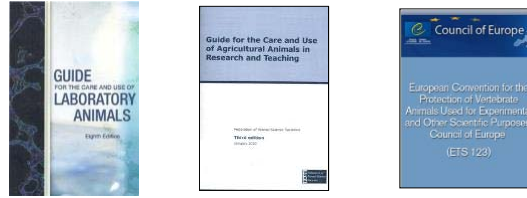
Section 2. Standards

- The *Guide for the Care and Use of Laboratory Animals (Guide)*, 8th Edition (NRC 2011), shall serve as a basic guide to the establishment of specific standards for accreditation.
- AAALAC International may establish standards based on prevailing directives, conventions and guidelines of the country in which the accreditable unit is located.
- The accreditable unit shall observe any and all statutes and governmental regulations which bear upon animal care and use including, but not limited to, the prevailing standards of sanitation, health, labor and safety of the jurisdiction(s) in which it is located.
- ...



www.aaalac.org

The Three Primary Standards



AAALAC relies on **Three Primary Standards** for evaluating laboratory animal care and use programs: the eighth edition of the *Guide for the Care and Use of Laboratory Animals* ([Guide, NRC 2011](#)); the *Guide for the Care and Use of Agricultural Animals in Research and Teaching* ([Ag Guide, FASS 2010](#)); and the [European Convention](#) for the Protection of Vertebrate Animals Used for Experimental and Other Scientific Purposes, Council of Europe;(ETS 123); along with other widely accepted guidelines. Since 1975, AAALAC International has also referred to other specialty publications for supplemental information about procedures or techniques related to the care and use of laboratory animals. These specialty publications are designated as Reference Resources. References included on this list have been formally reviewed and adopted by AAALAC International's Council on Accreditation as guidance for accredited units as well as the AAALAC International representatives during the site visit. Additionally, these references may be utilized during Council deliberations when discussing issues identified during site visits. When applicable, clarifying notes are appended to the reference, to provide additional information on any exclusions or clarification in the reference.



www.aaalac.org

Mandarin Chinese Japanese Traditional Chinese Portuguese Malaysian



Thai

Spanish

Russian



www.aaalac.org

Local Requirements and The *Guide*

- When no animal welfare law in the country – Follow the *Guide's* recommendations
- When some areas of animal welfare are not addressed in the local regulations – Follow the *Guide's* recommendations
- If the local regulations and requirements are specific and more stringent than the *Guide's* recommendations – Must follow the local requirements!



www.aalac.org

Engineering, Performance, and Practice Standards

(Pages 6-7)

Performance Standards

Engineering Standards



Practice Standards

Practice standard means the application of professional judgment by qualified, experienced individuals to a task or process over time, which has been demonstrated to benefit or enhance animal care and use. Much of the basis for professional judgment comes from information obtained from the peer-reviewed scientific literature and textbooks.



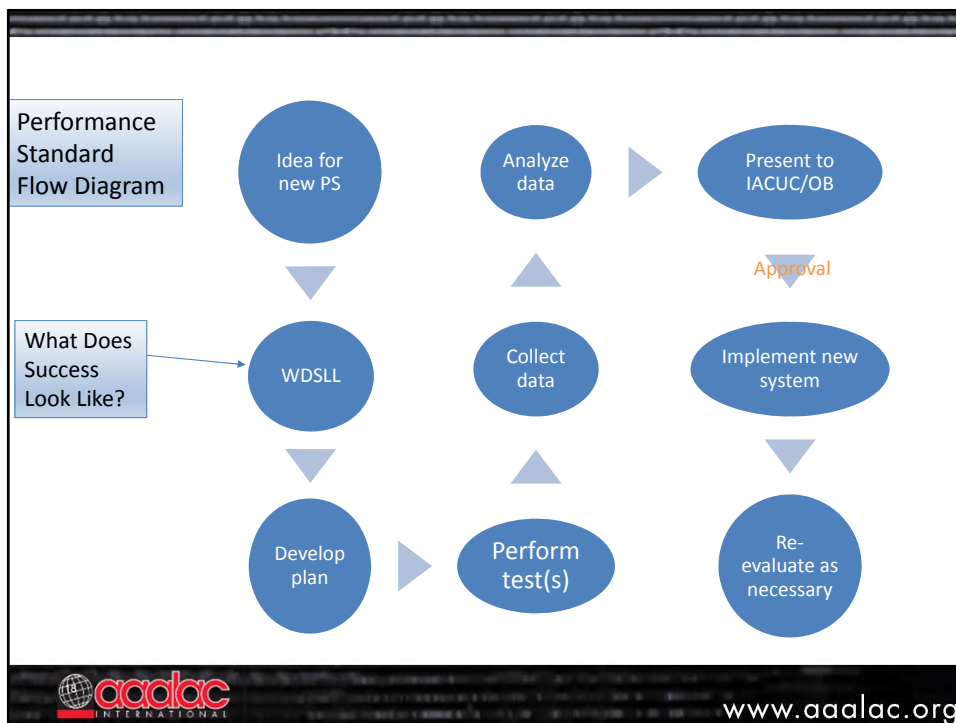
www.aalac.org

AAALAC International's Application of Performance Standards

- AAALAC International recognizes that engineering standards can serve as a useful baseline for some program elements, but considers the application of sound professional judgment to be critical to a successful and contemporary animal care and use program.
- Harmonizing the institutional procedures and practices using performance standards approach



www.aalac.org



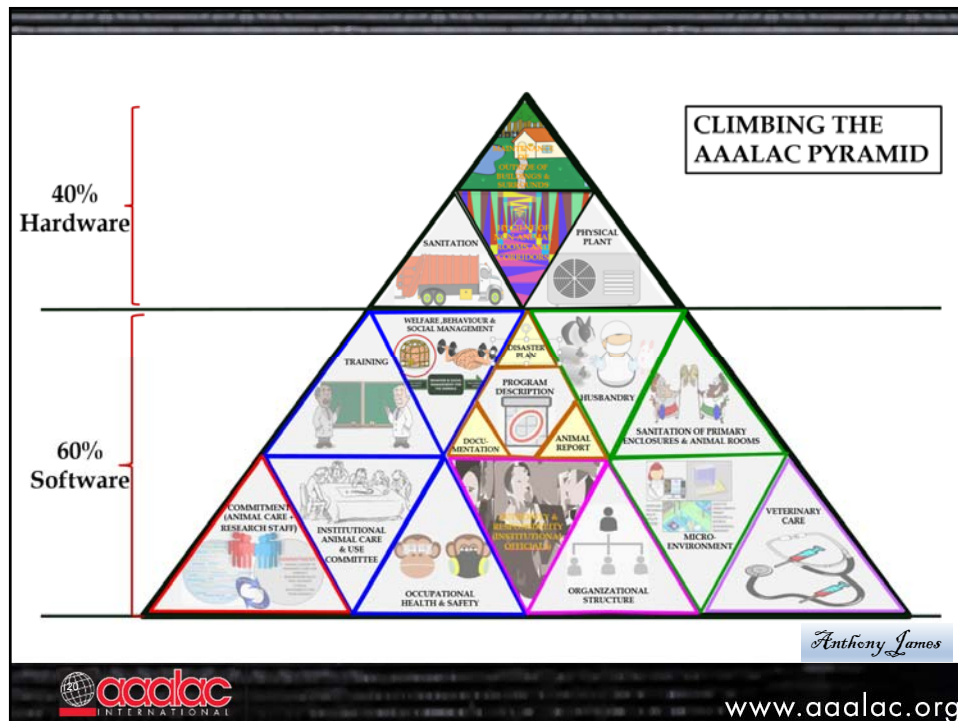
A comprehensive evaluation

Main Components of the Program

- Institutional administration/ resources
- IACUC composition/ function
- Animal environment/ management
- Occupational health and safety
- Veterinary care program
- Physical plant/ facilities



www.aaalac.org



Two categories of findings

- **Mandatory** – *a deficiency that must be corrected in order to maintain (or attain) full accreditation*
- **Suggestion for Improvement (SFI)** – *a deficiency that if corrected would improve your program, but correction is not essential to maintaining full accreditation status*



www.aaalac.org

Site Visit ≠ Inspection (Peer Review)

Site Visit = Understanding + Initial Evaluation

Documentation Review

- Program Description (PD)
- Policies and SOPs
- IACUC records, protocols,...
- OHS records
- Personnel training records
- Animals and animal room records
- Facility system records: HVAC,...

Facility Tour

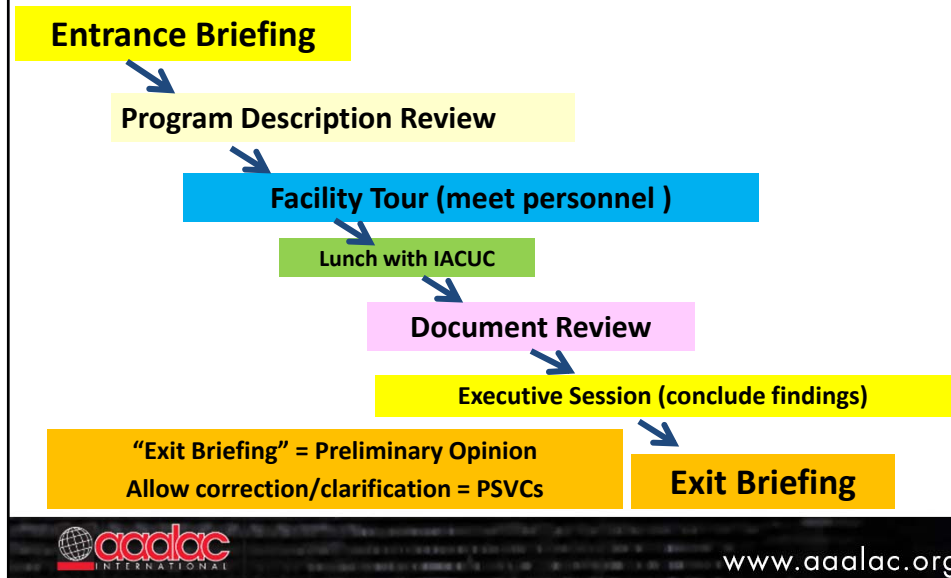
- Suitable and safe facility
 - Animal health & welfare
 - Research quality
- Animals
- Animal care & use practices/performance
 - consistency and safety
- Meet and talk to personnel

The entire process is completely confidential.



www.aaalac.org

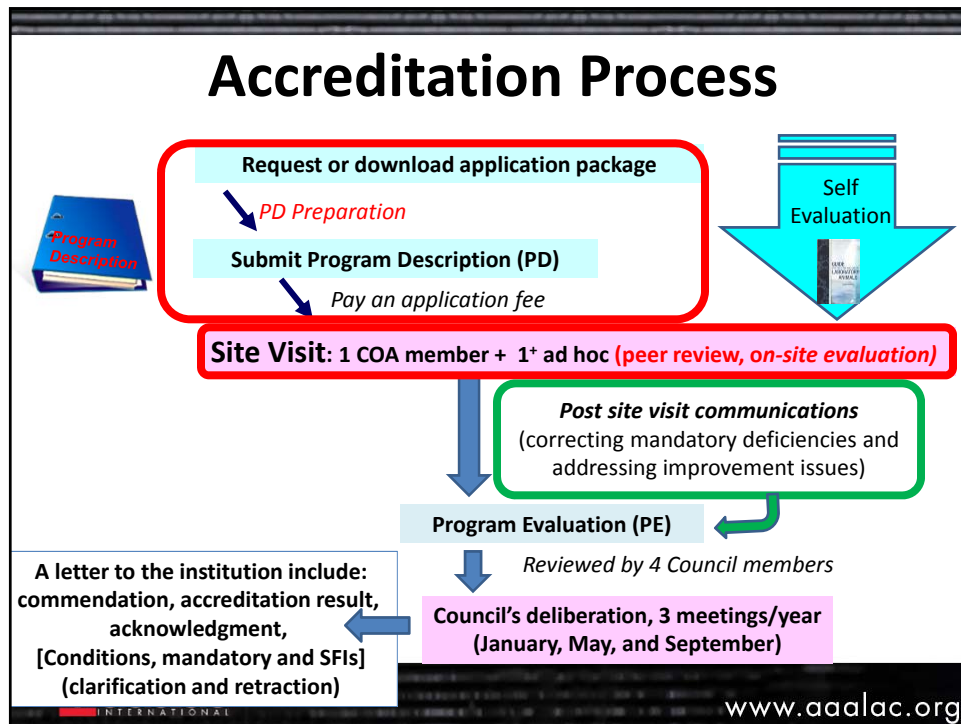
A Typical one-day Site Visit Schedule



Assessment Process

The same process applied globally

- Rely on local requirements first and address the gaps by following the *Guide* recommendations



Thank You!

accredit@aalac.org
www.aalac.org